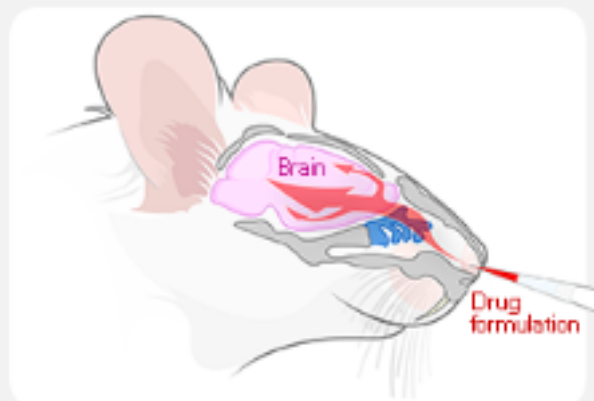


Intranasal administration is a non-invasive approach of delivering therapeutic agents directly to the central nervous system. Drug delivery occurs quickly along both the olfactory and trigeminal neural pathways *via* an extracellular route.

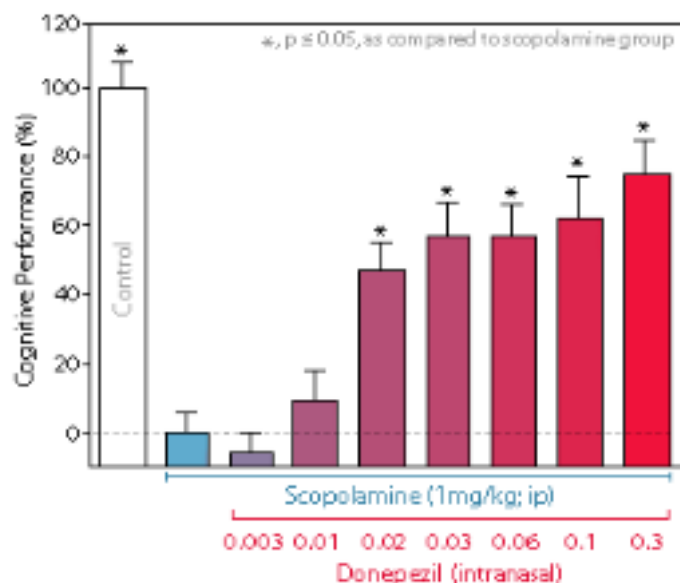
This method shows several advantages:

- it allows large molecules that do not cross the blood-brain barrier access to the brain,
- it reduces systemic exposure,
- it facilitates chronic treatment protocols,
- It is already employed in various medical conditions or diseases.



Here we provide data that proves the efficiency of intranasal administration approach in a cognitive deficit model routinely used at *NEUROFIT*.

Intranasal Donepezil administration reverses cognitive deficit induced by Scopolamine



Donepezil treatment through intranasal administration clearly reverses scopolamine-induced deficit with a marked dose-effect.

The results are reliable to the results previously obtained with Donepezil in oral administration.

Intranasal administration is a valuable alternative to ICV approach, acute or repeated, with or without pump.

NEUROFIT: Your worldwide preferred partner, offering relevant *in vivo* and cellular disease models for drug screening and evaluating the mechanism of action of your compounds.

Other therapeutic areas

Ask for a quote

Other available assays

Please, do not hesitate to consult our [website](#) for more information about our animal and neurocellular models, or to contact us directly for bespoke solutions.

Kind regards,
NEUROFIT team

Please visit our website : <http://www.neurofit.com>
E-mail : neurofit@neurofit.com

Tel : +33 (0)3 88 65 16 06
Fax: +33 (0)3 88 65 16 22